

Boomwhacker Frame & Rainbow Range



Enhance your outdoor space or sound garden and encourage music-making at playtimes and lunchtimes. Great also for indoors. Easily moved into hall when wet and cold outside.

These brightly coloured tuned percussion tubes can be played from both sides so children can work together to make sounds and compose tunes. Combine with singing, movement and dance. Why not create your own Boomwhacker orchestra!

Each colour plays its own distinct note. A great resource to use alongside our other Rainbow Range as all the colours and notes match. Perfect to give non-musical specialists confidence.



MES1246



MES0762

Activity ideas



Play along

Play different recorded pieces of music and play the Boomwhacker along with it. Try:

- We are the Champions, Queen
- Don't Stop Believing, Journey
- Believer, Imagine Dragons
- We will Rock You, Queen
- Living on a Prayer, Bon Jovi

Here are some of our ideas for enjoying your Boomwhacker. Give them a go and let us know how you get on. If you have any brilliant ideas of your own, we'd love to hear from you.

Simon Says

Play a game of Simon Says using different coloured cards to match the Boomwhacker Tubes.

Remember if Simon doesn't say to play then the person who played that note is out and then becomes the caller.



Dance to the Beats!

Listen to Boomwhacker music on Youtube and follow the tutorials online.

Make up dances to accompany the music notes played.

Name that Tune

Have notes of tunes but without title or words. Follow the letters of notes and play.

Can you name the tune?

e.g. CC GG AA G

Boomwhacker Orchestra!

The conductor can hold up coloured cards to show which Boomwhacker to play. Also have a ? Card and when the conductor shows this card all the orchestra stop and listen.

The conductor can use their arms to make the music louder/quieter, faster/slower, to stop and start.

Allow everyone to play different parts in the orchestra and swap.



Play the Scales

Play the Boomwhackers in order making an ascending and descending scale.

Use the music alphabet

C, D E F G A B C'

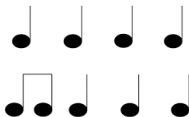
And

Do, Re Mi Fa Sol La
Ti Do'

Rhythm Games

Copy melodic patterns

Compose and perform own rhythms and sequences



Play the chord

Explore major chords and minor chords.

When 2 or more notes are played together, they produce a CHORD.

C Chord	G Chord	F Chord
C, E G	G D B	F C' A

E Minor	A Minor	D Minor
E G B	A C' E	D F A



Very Scientific!

Experiment with different ways to play and make sounds.

Learn that pitch is determined by length. The longer the tube the lower the sound.

Order the Boomwhackers from low to high. Play one at a time and explore how length affects pitch.

Songs, chants and stories

Say nursery rhymes and add sounds to the words.

Make up funny poems, rhymes, songs and chants.

Explore different sounds that can be created and use along with a story.

Compose

Make own compositions and create own music.

Try to make combinations with a bass line using the lower notes, a middle line using the middle notes and an upper line using the shorter, higher notes.

Play from High to Low

Then play Low to High



A little book of songs



Use our little book of songs to play simple tunes. Colour coded to match the colours of the Boomwhacker, making it easier for children to follow.

Use the music alphabet

C, D E F G A B C'

And

Do, Re Mi Fa Sol La Ti Do'



Twinkle, Twinkle, Little Star

C C G G A A G

F F E E D D C

G G F F E E D

G G F F E E D

C C G G A A G

F F E E D D C

Baby Shark

C D F
F F F F F F F

C D F
F F F F F F F

C D F
F F F F F F F

F F E

You are my Sunshine

D G A B B B A B
G G

G A B C E E D C
B

G A B C E E D C B
G

G A B C A A B G



London Bridge

GA G F EF G

DE F EF G

GA G F EF G

D G EC
GA G F EF G

DE F EF G

GA G F EF G

D G EC

Frere Jacques

GA BG

GA BG

B CD

B CD

DE D C B G

DE D C B G

G D G
G D G

London's Burning

DD GG

DD GG

AA BB

AA BB

DD DD

DC BB

DC BB



Try Playing along to Nursery Rhymes

Hickory Dickory Dock

E F G G A B C
E F G G A B C
G C C B
B A A G
G A G F E D C

We hope you enjoy these activities and have lots of fun with your Boomwhacker and Rainbow Range.

If you have a brilliant idea that you would like to share with us, please get in touch. We would love to hear from you.

