

Art & Craft Ideas - Green Man Inspired Mask



Take your inspiration from nature in this exciting project through colour, pattern and form. The creation of this 3D mask is a wonderful opportunity for children to explore a range of art techniques and practice a variety of creative skills as they explore colour mixing, add layers of texture, create surface patterns, make a printing block and manipulate a variety of art and craft materials to build the finished 3D piece.

What You Will Need:

- [Biodegradable Face Masks](#)
- [Chroma Molten Metals Acrylic Metallic Paints](#)
- [Paint Sticks Assorted](#)
- [Printing Ink](#)
- [Lino Ink Printing Rollers](#)
- [Brown Craft Paper](#)
- [Sugar Paper Assorted](#)
- [Coloured Card Assorted](#)
- [TTS PVA Glue](#)
- [Self-Adhesive Craft Foam Sheets](#)
- [Grey Board](#)
- Foraged twigs

How to decorate the basic mask:

Step 1



Paint thin layers of metallic gold (or a mix of metallic colours) onto the biodegradable paper mask. Leave each layer to dry before adding the next as this will give you a good 'flat' finish. Use approx. two/three layers.

Step 2



Add the first layer of 'texture' using torn leaf shapes of tissue paper stuck onto the mask in random patterns using slightly watered down PVA glue. Stick the tissue on with glue, paint the watered down PVA over the top to seal the surface. Using 'neat' PVA create ivy inspired 'vines' across the face using garden string/coloured cotton. Add further decoration using acrylic paint dry brushed on to the surface to add lichen type textures.

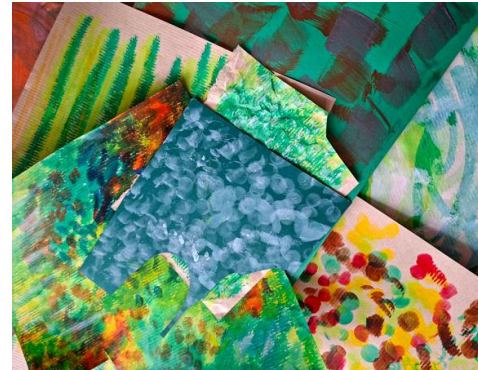
Creating Patterned Paper

What You Will Need:

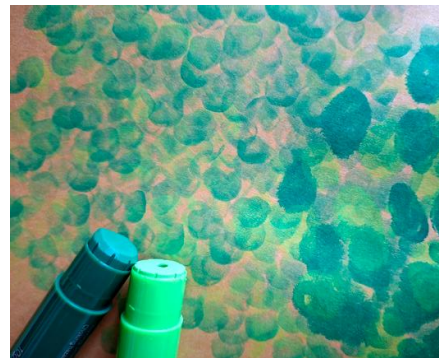
- [Paint Sticks Assorted](#)
- [TTS Ready Mixed Paint](#)
- [Metallic Acrylic Paints](#)
- [Brown Craft Paper](#)
- [Assorted Sugar Papers](#)
- [Coloured Card Assorted](#)
- Assortment of 'found' texture stampers/brushes

Step 1

Having looked at examples of shapes, colours and sizes of leaves (inc examples in different seasons eg autumn) encourage children to explore mark making on a variety of colours, types, weights of paper and card using a range of creative resources to recreate some of the leaf patterns and colour combinations. Use different sized brushes, texture stampers, scrunched paper, sponges etc to explore pattern & texture printing. By the end of this session, you should have a wonderful selection of patterned papers from which leaves for the masks can be cut.



Explore combining a range of paints, paint sticks, printing and texture stamping resources to create a selection of exciting, patterned papers from which leaf shapes can be cut or printed onto using a handmade printing block.



Paint sticks have a fabulous strength of colour, can be blended and dry very quickly so ideal if you are short on time! Try combining beautiful metallic acrylic colours with ready mixed paint to add a gorgeous shimmer!

Creating A Simple Printing Block

What you will need:

- [Self-Adhesive Craft Foam Sheets](#)
- [Grey Board](#)
- [Printing Ink](#)
- [Lino Ink Printing Rollers](#)

Step 1

Using very basic materials you can quickly create a simple printing block. Take a sheet of self-adhesive foam and draw your design on to the surface.

Step 2



Cut out the design, peel off the backing and stick to a piece of grey board larger than the foam design.

When creating this mask, you may want to only produce the patterned papers to cut out leaves from but if you'd like to add an extra layer of technique making simple printing blocks of leaf shapes to print over the top of some of the printed papers can produce some exciting results.

Step 3

Squeeze a small amount of block printing ink onto an inking tray and roll out until there's an even layer of ink, it makes a 'rasping' sound and looks a little like the texture of orange peel.



Step 4

Roll an even layer of ink onto the printing block, press the inked-up block onto some of the decorated paper. Press down and rub firmly on the back of the block to help transfer the ink onto the paper's surface. Peel the block off carefully to reveal the print. Repeat around the paper to produce a number of leaf designs. Leave the ink to dry completely and cut the leaves out ready to use.



Assembling the Mask

Step 1

Once a selection of leaf shapes has been cut out begin to 'build' the mask. Use a selection of colours, sizes and leaf shapes to decorate. NB. Leaves have been added to the sides to increase the overall size of the mask and create a more 'organic' shape blurring the basic face shape. Stick the paper/card leaves to the mask using PVA glue.



Step 2

To add more interest and dimension we've added foraged twigs. Use a low melt glue gun to add the twigs for a quicker more secure stick. Further dimension can be added by sticking some cut out leaves to string to create dangling 'vines'.

Add a tactile element by sticking [natural moss](#) to the mask using PVA glue.



Finishing Touches!

To finish add further colour and interest by making 'fungi' from painted polystyrene shapes and moths/butterflies using card & pipe cleaners.

